



NEW CATALOGUE
NO. 39

UTIQUE

LUXURY MASSAGE CANDLE FOR FIRMING / RELAXING RITUAL

Made of the highest quality soy wax, this luxury candle combines carefully selected natural ingredients and essential oils that care for the body and soothe the soul. This massage and aromatherapy duo improves well-being, stimulates the senses, and superbly relaxes.

- **JOJOBA OIL** anti-inflammatory, regulates sebum secretion, and protects skin from negative external factors
- **AVOCADO OIL** rich in fatty acids, vitamin A, D, and E, nourishes intensively
- **SWEET ALMOND OIL** deeply moisturizes, giving softness and elasticity
- **ARGAN OIL** anti-aging, regeneration and rebuilding properties

HOW TO USE

1. Light the candle and allow it to burn for 15 minutes, then extinguish the flame.
2. Spread the warm (not hot) wax on selected parts of the body, gradually increasing pressure as the muscles relax.
3. After the massage, rub the remaining wax into the skin or remove it with a warm, damp towel.
4. Before using the candle again, shorten the wick by about 5 mm.



UTIQUE

RELAXING RITUAL LUXURY MASSAGE CANDLE

NATURAL ESSENTIAL OIL - LEMONGRASS

- relaxing and calming effect
- relaxes muscles
- prevents skin inflammation
- refreshes skin, giving it a healthy, radiant look

i



UTIQUE

FIRMING RITUAL LUXURY MASSAGE CANDLE

NATURAL ESSENTIAL OIL - EUCALYPTUS

- relieves tension and stress
- improves microcirculation
- gives skin a natural glow
- eases breathing during the massage

NATURAL ESSENTIAL OIL - GINGER

- warm, stimulating aroma adds energy and uplifts mood
- detoxifies skin
- has anti-cellulite properties, improving skin elasticity



FONTAINAVIE

SKINCARE MIXING JAR

- the pump allows for convenient storage, dosing, and mixing of any skincare products, such as body lotion and self-tanning drops or face cream and foundation
- the small size and tight closure makes it perfect for travel

HOW TO USE

Unscrew the jar, fill it with any cosmetic, and squeeze it out using the pump. Then add another product, mix it together, and it's ready to pump and apply to the skin.



PURE ROYAL

PERFUMED HAND WIPES

- cleanse and refresh the hands
- with a beautiful PURE ROYAL scent
- ideal for travelling
- perfect as a gift, as an accessory to perfume or cosmetics with the same accords
- two options to choose from: 900 and 910

PURE ROYAL 900

Type: fascinating, unique, charming with the scent of cherry

Fragrance notes

Head: black cherry, cherry liqueur, bitter almonds

Heart: rose, jasmine, sour cherry

Base: tonka bean, sandalwood, vetiver, cedar

PURE ROYAL 910

Type: dry, with a hint of sweetness

Fragrance notes

Head: jasmine, saffron

Heart: balsam fir, cedarwood

Base: cashmere wood, ambergris, moss, brown sugar



PURE ROYAL

UNISEX PERFUME



PURE
ROYAL



PURE ROYAL 504

ORIENTAL WITH A NOTE OF VANILLA

Type: addictive, magnetic

Fragrance notes

HEAD: pink pepper, saffron

HEART: cedarwood, oud

BASE: benzoin resin, vanilla



PURE ROYAL 948

FLORAL WITH A FRUIT NOTE

Type: brave, stimulating the senses, exceptional

Fragrance notes

HEAD: blackcurrant, green notes, lily of the valley

HEART: rose, tuberose, jasmine

BASE: velvet musk, orange wood, red fruits



PURE ROYAL 949

WOODY WITH AN ORIENTAL NOTE

Type: unique, attractive

Fragrance notes

HEAD: juniper berry, mandarin, coriander leaf, cumin

HEART: tobacco, iris, frankincense, rockrose

BASE: sandalwood, leather notes, vanilla, amber



PURE ROYAL 950

FLORAL WITH A WOODY NOTE

Type: fresh, aromatic, memory evoking

Fragrance notes

HEAD: sage, clary sage, eucalyptus

HEART: mirabelle, iris

BASE: cedarwood, moss

PURE ROYAL

PERFUME FOR WOMEN



PURE
ROYAL



PURE ROYAL 854

FLORAL WITH AN ORIENTAL NOTE

Type: sensual, brave, uncompromising

Fragrance notes

HEAD: lychee, grapefruit, red currant

HEART: rose, woody notes, peach, apricot

BASE: vetiver, vanilla, gourmand notes



PURE ROYAL 856

FLORAL WITH AN ORIENTAL NOTE

Type: airy, yet full of charm and strength

Fragrance notes

HEAD: bergamot, mandarin, pink pepper, apricot

HEART: rose, jasmine, orange blossom, water notes

BASE: patchouli, sandalwood, tonka bean, amber



PURE ROYAL 855

FLORAL WITH A CHYPRE NOTE

Type: attractive, tempting

Fragrance notes

HEAD: pear, sweet pea, violet leaf

HEART: rose, jasmine, ylang-ylang, lily of the valley

BASE: patchouli, vetiver, ambrette seeds



PURE ROYAL 857

FLORAL WITH A CITRUS NOTE

Type: sensual, self-confident, aware

Fragrance notes

HEAD: ylang-ylang, green notes

HEART: orange wood, white flowers

BASE: vanilla, milky notes

PURE ROYAL

PERFUME FOR WOMEN AND MEN



PURE
ROYAL



PURE ROYAL 858

ORIENTAL WITH A FRUIT NOTE

Type: intense, feminine, vibrant

Fragrance notes

HEAD: blackcurrant, pink berries, pear, green notes

HEART: lily of the valley, patchouli, rose, jasmine

BASE: vanilla, musk, dry wood, orange



PURE ROYAL 859

WOOD WITH A CITRUS NOTE

Type: cool yet energetic

Fragrance notes

HEAD: lemon, orange, ginger, bergamot, pepper, grapefruit, lemongrass, blackcurrant, pineapple, pear, basil, anise

HEART: juniper, cypress, geranium, lily of the valley, magnolia, rose, eucalyptus

BASE: Haitian vetiver, patchouli, Virginia cedarwood, musk, benzoin resin

PURE

PERFUME FOR WOMEN AND MEN



PURE 726

FLORAL WITH A FRUIT NOTE

Type: charming, sensual, seductive

Fragrance notes

HEAD: mandarin, petitgrain, cherry, pear

HEART: white flowers, ylang-ylang, cherry blossom

BASE: raspberry, gourmand notes



PURE 727

ORIENTAL WITH A NOTE OF GOURMAND

Type: energetic, alluring

Fragrance notes

HEAD: lavender, lemon, grapefruit

HEART: coconut, candied fruit, musk

BASE: cedarwood, sandalwood, tonka bean, amber



PURE 728

FOUGERE WITH A WOOD NOTE

Type: extraordinarily masculine, the quintessence of passion and strength

Fragrance notes

HEAD: bergamot, mandarin, pink pepper, cardamom

HEART: lavender, mugwort, sea notes, cypress

BASE: cedarwood, musk, suede, amber

AURILE SELECTION

DARK CHOCOLATE



MINIMUM
54% COCOA



Cherry Currant Fusion
with sweetened cranberries,
freeze-dried cherries,
and currants



Cranberry Crunch
with sweetened
cranberries and almond
flakes



Nutty Berry Blossom
with whole hazelnuts,
sweetened cranberries,
and cornflower blossoms



Raspberry Bites
with freeze-dried raspberries

AURILE SELECTION

MILK CHOCOLATE



MINIMUM
36% COCOA



Cookie Chunk
with cocoa crisps
and brownie chunks



Currant & Nut Mix
with whole hazelnuts, almonds,
and cashews and dried currants



Almonds & Amaretti Delight
with almonds, amaretti cookies,
and apricot kernels



SMART & CLEAN BIO

POWDER-TO-GEL WASHING UP LIQUID

- dissolvable powder for 250 ml of lukewarm water
- removes even stubborn dirt
- biodegradable, environmentally friendly



SOLD WITH
CONVENIENT BOTTLE



FAMILIAR PRODUCTS WITH A NEW LOOK AND ENHANCED FORMULA SLIM BODY SYSTEM NEW GENERATION

WHAT'S NEW:

- added vitamin B6 to improve emotional hunger control and help maintain nervous system balance
- new flavor proportions of orange and citric acid for improved taste



90 SACHETS FOR DAY
A ONE-MONTH SUPPLY
OF SUPPLEMENTS



FAMILIAR PRODUCTS WITH A NEW LOOK AND ENHANCED FORMULA INNER BALANCE NEW GENERATION

WHAT'S NEW IN THE DAY SUPPLEMENT:

- added vitamin B6 to improve emotional hunger control and help maintain nervous system balance
- fewer sweeteners

WHAT'S NEW IN THE NIGHT SUPPLEMENT:

- sachets of water dissolvable supplements replace the capsules, easing use and absorption
- magnesium content increased from 15 to 56.3 mg to more effectively address deficiencies and feeling of hunger
- jasmine flower extract replaces powdered hop cones to improve relaxation and sleep quality
- collagen, the protein of youth, added for its multitude of positive effects on the skin



60 SACHETS FOR DAY + 30 SACHETS FOR NIGHT
A ONE MONTH SUPPLY OF SUPPLEMENTS

FAMILIAR PRODUCTS WITH A NEW LOOK

UTIQUE

- Perfect Matte 2-in-1 Coverage Foundation
- Sunny Soft Touch Luminous-Bronzing Powder
- Glass Skin Highlighter Palette



WEIGHT AND COMPOSITION
UNCHANGED



FAMILIAR PRODUCTS WITH A NEW LOOK

UTIQUE

- Luxury shower gel: Bubble, Malachite
- Luxury Body Balm: Ruby, Muffin, Malachite



FAMILIAR PRODUCTS WITH A NEW LOOK

HOME RITUAL FRAGRANCE CANDLE 2.5 KG

A captivating scent in the highest quality standard. Creates a sensual atmosphere and a tasteful decoration for every interior. Contains paraffin produced via modern hydrotreating, meeting the stringent German RAL candle standard.

- up to 250-hour burning time
- 4 cotton wicks
- elegant wooden lid
- high-quality temperature resistant glass
- 3 PURE ROYAL compositions to choose from: 900, 910, 913

Home Ritual fragrance candles with the RAL quality mark are:

- intense fragrance
- burns evenly
- high quality wicks - strong, cotton, appropriately thick - resistant to breakage and sinking
- minimized smoke, non-irritating
- minimal soot deposits on the glass, ensuring a beautiful look



FAMILIAR PRODUCTS WITH A NEW LOOK

HOME RITUAL SERIES

HOME RITUAL FRAGRANCE CANDLES

- PURE 05, 52, 431, 436
- PURE ROYAL 199

HOME RITUAL FRAGRANCE STICKS

- PURE 110, 180

HOME RITUAL WAX MELTS

- PURE 431, 436



FAMILIAR PRODUCTS WITH A NEW LOOK

PERFUMED BODY BALM

- with vitamin E, B5, and allantoin
- iconic perfume scents

PURE 413

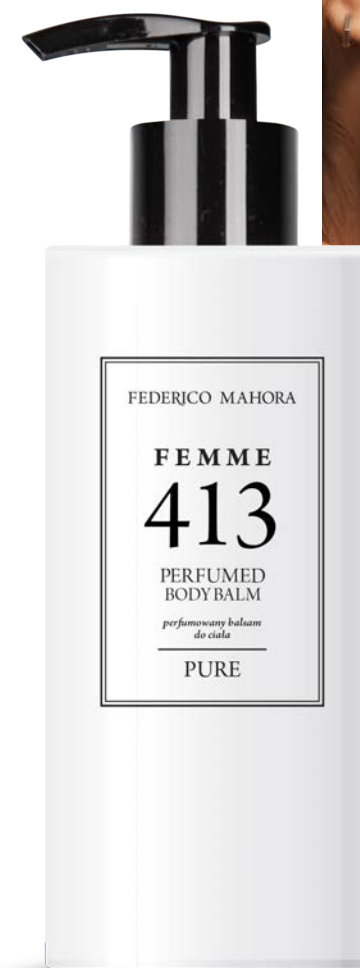
Type: filled with sweetness, slightly playful

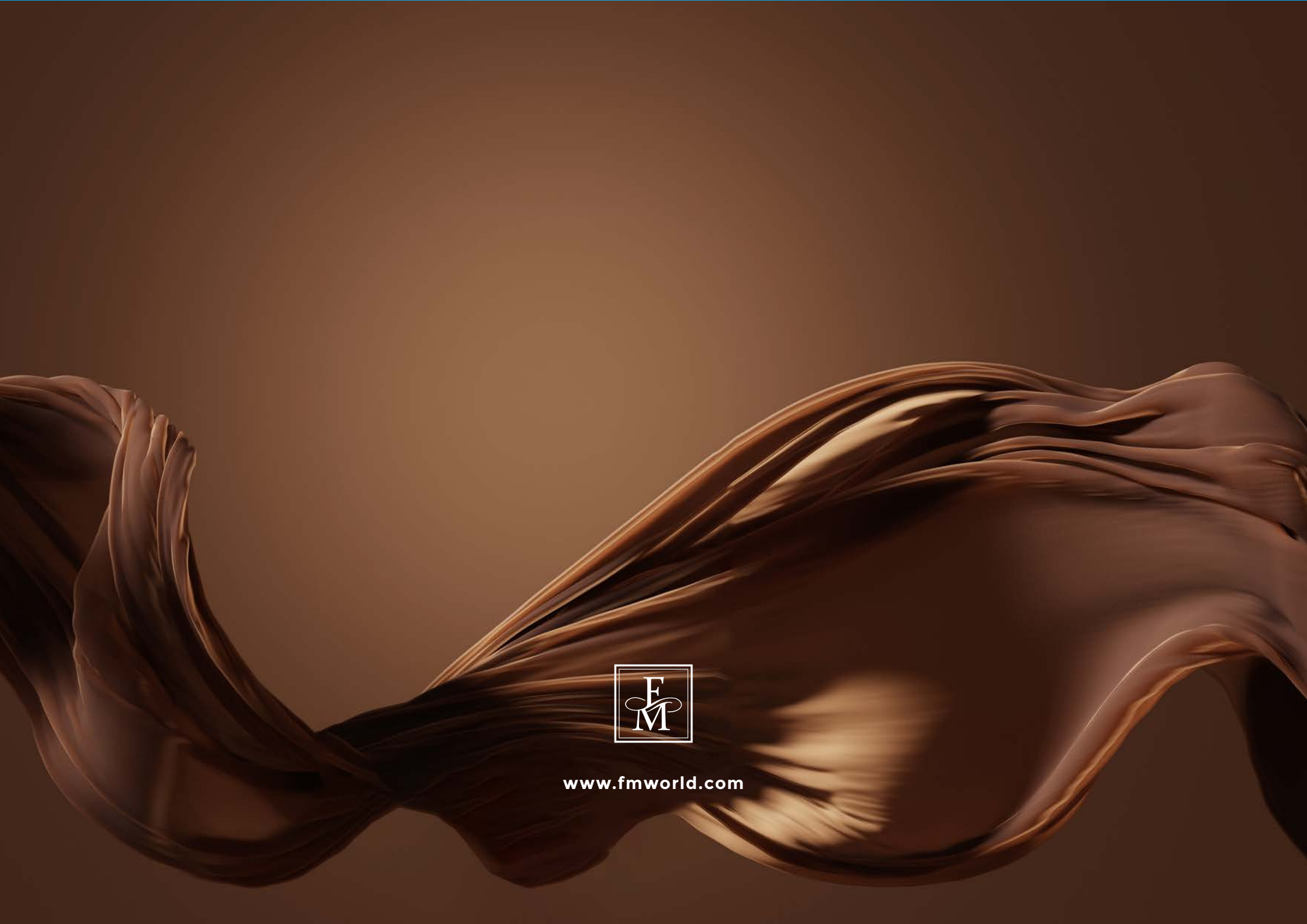
Fragrance notes

HEAD: blackcurrant, pear

HEART: iris, jasmine, orange blossom

BASE: chocolate pralines, patchouli, vanilla





www.fmworld.com